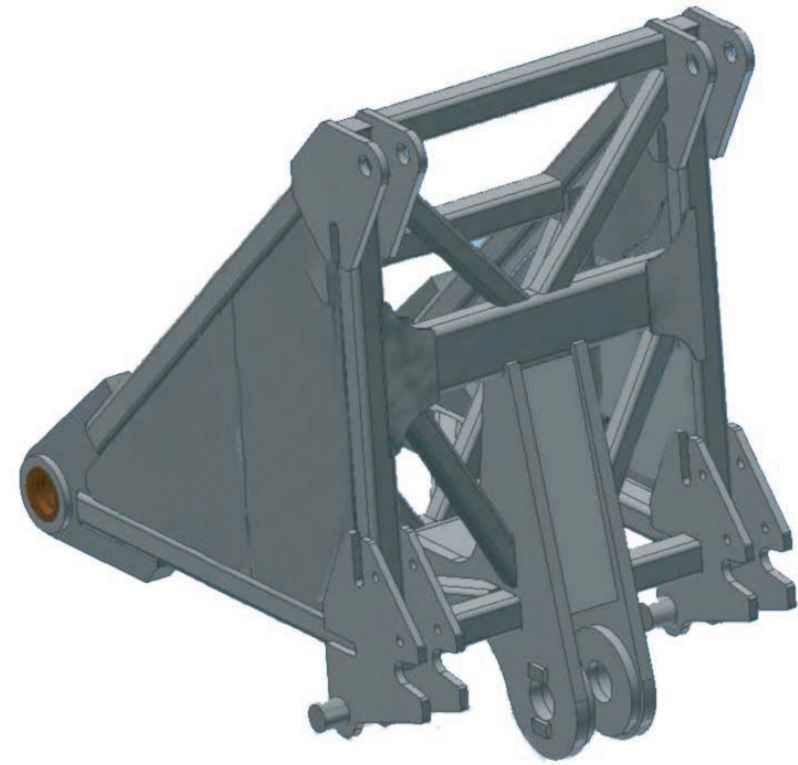
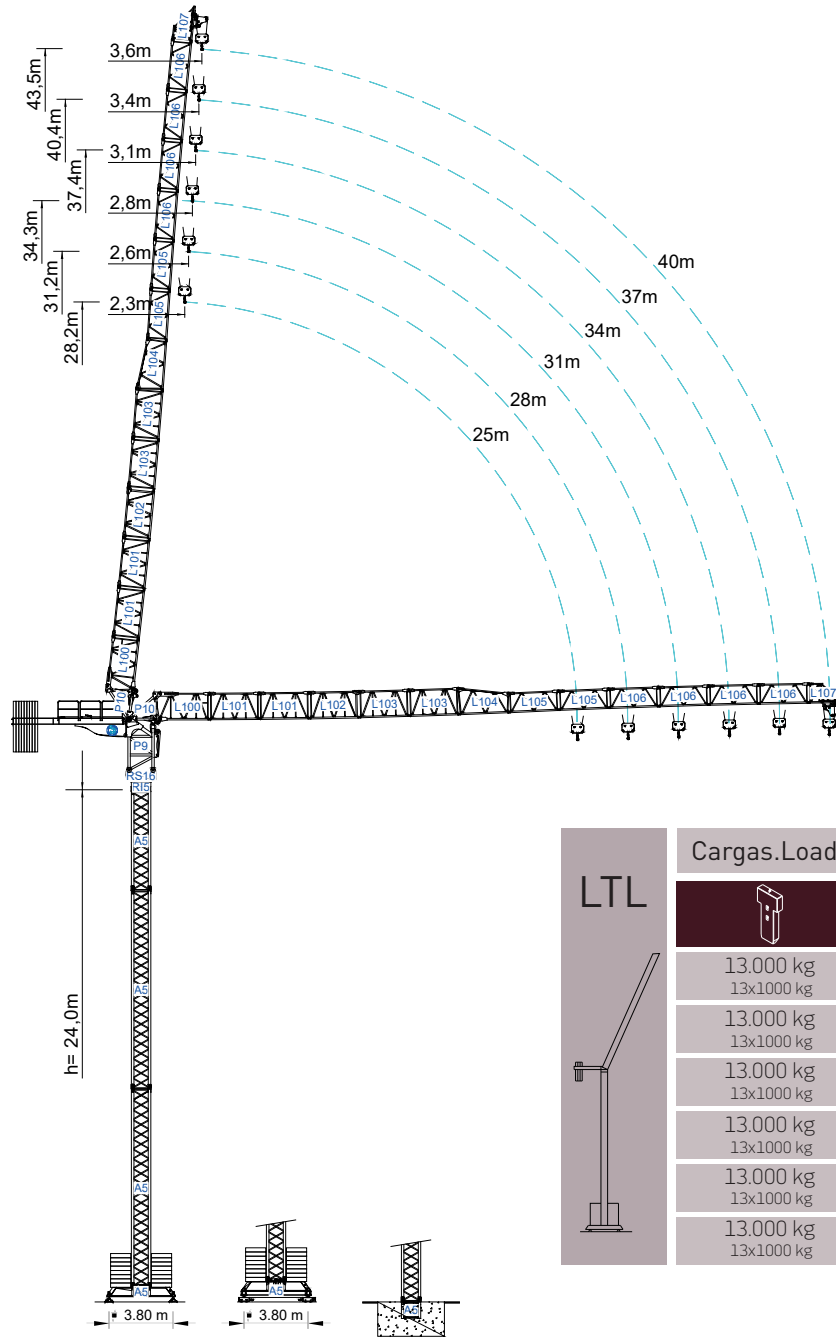
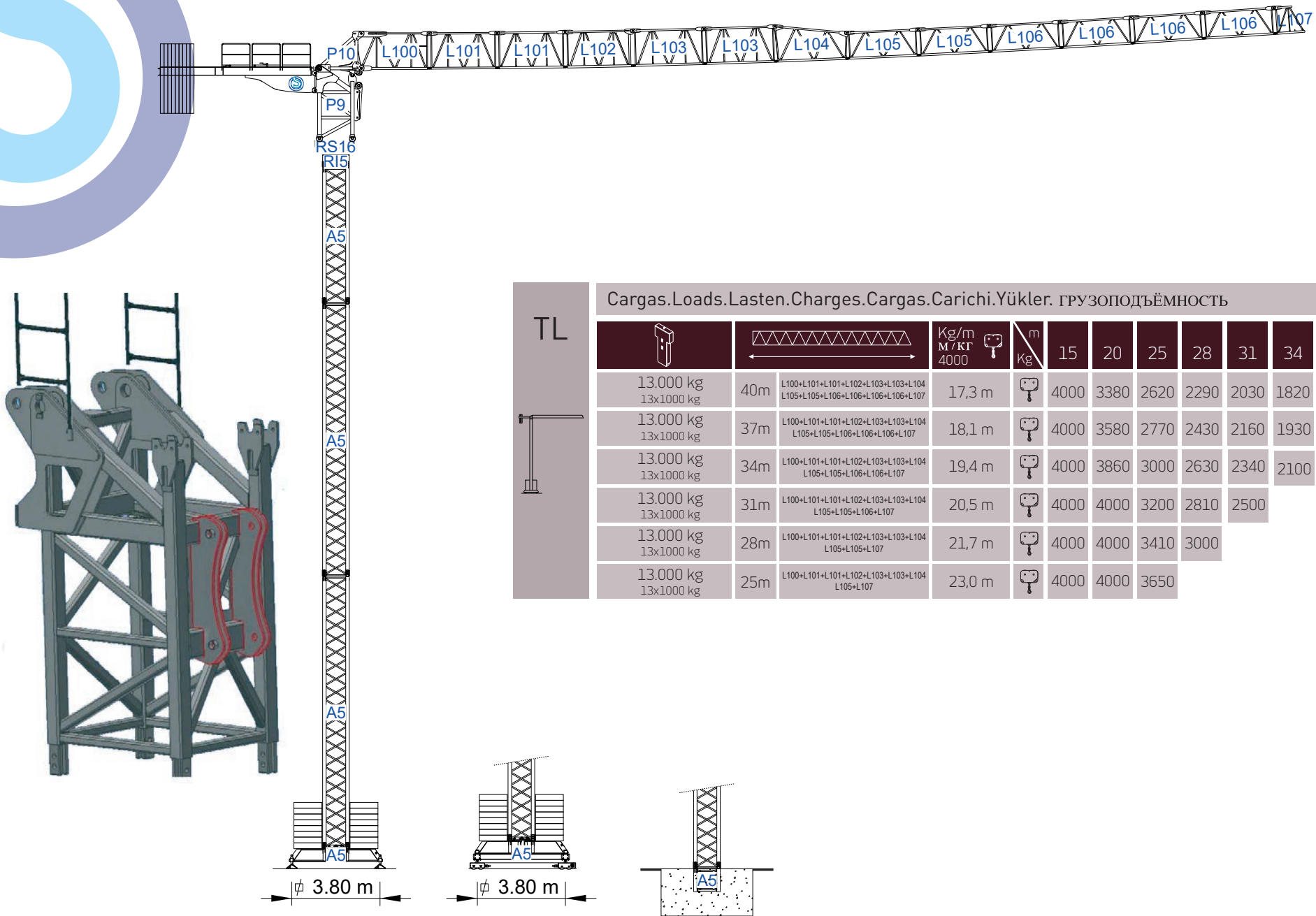
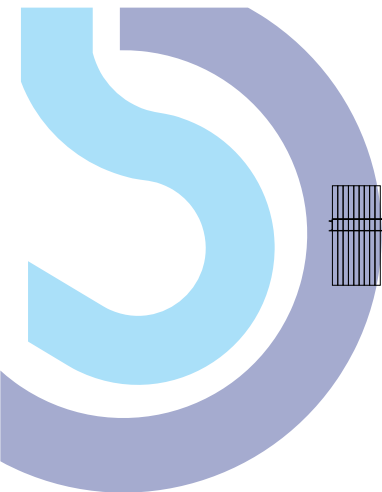


SGT 4015LTL

new model






LTL	Cargas.Loads.Lasten.Charges.Cargas.Carichi.Yükler. ГРУЗОПОДЪЕМНОСТЬ											
			Kg/m M / KГ 4000		m	15	20	25	28	31	34	37
13.000 kg 13x1000 kg	40m	L100+L101+L101+L102+L103+L103+L104 L105+L105+L106+L106+L106+L106+L107	23,6 m		4000	4000	3670	3060	2570	2160	1810	1500
13.000 kg 13x1000 kg	37m	L100+L101+L101+L102+L103+L103+L104 L105+L105+L106+L106+L106+L107	24,0 m		4000	4000	3770	3140	2630	2200	1750	
13.000 kg 13x1000 kg	34m	L100+L101+L101+L102+L103+L103+L104 L105+L105+L106+L106+L107	24,1 m		4000	4000	3780	3150	2640	2100		
13.000 kg 13x1000 kg	31m	L100+L101+L101+L102+L103+L103+L104 L105+L105+L106+L107	24,1 m		4000	4000	3780	3150	2500			
13.000 kg 13x1000 kg	28m	L100+L101+L101+L102+L103+L103+L104 L105+L105+L107	24,1 m		4000	4000	3740	3000				
13.000 kg 13x1000 kg	25m	L100+L101+L101+L102+L103+L103+L104 L105+L107	24,3 m		4000	4000	3650					



TL



Cargas.Loads.Lasten.Charges.Cargas.Carichi.Yükler. ГРУЗОПОДЪЕМНОСТЬ

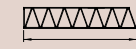

 13.000 kg 13x1000 kg	 40m	L100+L101+L101+L102+L103+L103+L104 L105+L105+L106+L106+L106+L106+L107	Kg/m M/кГ 4000	 m Kg	15	20	25	28	31	34	37	40
					17,3 m	4000	3380	2620	2290	2030	1820	1650
13.000 kg 13x1000 kg	37m	L100+L101+L101+L102+L103+L103+L104 L105+L105+L106+L106+L106+L107	18,1 m	4000	3580	2770	2430	2160	1930	1750		
13.000 kg 13x1000 kg	34m	L100+L101+L101+L102+L103+L103+L104 L105+L105+L106+L106+L107	19,4 m	4000	3860	3000	2630	2340	2100			
13.000 kg 13x1000 kg	31m	L100+L101+L101+L102+L103+L103+L104 L105+L105+L106+L107	20,5 m	4000	4000	3200	2810	2500				
13.000 kg 13x1000 kg	28m	L100+L101+L101+L102+L103+L103+L104 L105+L105+L107	21,7 m	4000	4000	3410	3000					
13.000 kg 13x1000 kg	25m	L100+L101+L101+L102+L103+L103+L104 L105+L107	23,0 m	4000	4000	3650						

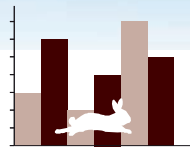
SGT 4015LTL

new model

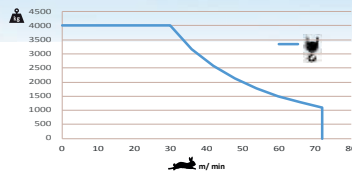



 2000/14/CEE 2005/88/CEE	 2006/95/CEE	400V 50Hz 60Hz	50m 4x16mm ²
--	--	----------------------	----------------------------

	40	37	34	31	28	25
	5610	5440	5270	5100	4870	4640



		
0 a 75 m/min	22 kW	



	58 kVA
	400 V +/- 5% (50/60 Hz)

Velocidade de elevação . Hoisting speed . Hubgeschwindigkeit . Vitesse d'élevation .
Velocidad de elevacion . Velocità di sollevamento . Kaldirma hizi (m/min) .
Скорость подъёма (м/мин)





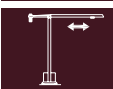
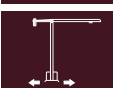


h= 12m - 2x40'
h= 60m - 3x40'



h= 12m - 2x40'
h= 60m - 3x40'



		
	1° a 85°	18,5 Kw
	0 a 0,8 r.p.m.	1x65 N.m
	0 a 50 m/min	3 kW
	0-15 m/min	2x3 kW



Elementos . Parts . Teile . Éléments . Elementos . Parçalar . ЭЛЕМЕНТЫ

		A (mm)	B (mm)	C (mm)	kg	Code
L100		3120	1175	1630	1820	533 4015
L101		3100	1160	1590	350	
L102		3100	1160	1590	350	
L103		3100	1160	1590	330	
L104		3100	1160	1590	315	
L105		3100	1160	1190	230	
L106		3100	1160	1190	170	
L107		2370	1160	1190	220	
RS16 RI5		1780	1350	1780	2340	
P9/P10		4820	1470	2350	7340	
CL16		3140	1470	1360	850	
CL17		3200	1360	570	350	
CP		3000	160	960	13x1000 13000	
TOTAL					27665	
		12000	1620	1620	3450	508 12 00
		6130	1620	1620	1800	508 06 00
		3195	1620	1620	1070	508 06 01
		3195	1830	1830	1100	508 06 03
		1775	1600	1600	650	508 06 02
		6620	500	1040	2190	608 00 01
		3210	340	1040	2x980 1960	
TOTAL					4150	